

Ewelme News



June/July 2026

BANG Dawn Chorus walkers experienced nearly 50 confirmed bird species... p17

EWELME VILLAGE PRESCHOOL

A small, unique and welcoming Preschool set in the beautiful village hall in Ewelme. With an engaging curriculum, children have the opportunity to learn and grow in a safe, nurturing environment.

- ✓ Play-based learning
- ✓ Developmentally appropriate curriculum
- ✓ Forest School
- ✓ Innovative use of indoor & outdoor space
- ✓ Places (incl. funded places) available from 30 months

Registered Charity No1067529

CONTACT US

Ewelme Village Preschool, Ewelme
Village Hall, The Street, Ewelme,
Oxfordshire, OX10 6HQ

☎ 01491 825 483

✉ ewelmevillagepreschool@gmail.com

🌐 <https://ewelmevillagepreschool.org.uk>



250 varieties and colours of basket & patio plants all grown on the nursery

Busy Baskets Nursery trading as:



Seasonal Opening:
March-July & September-November
See website for details

HANGING BASKET
SPECIALISTS

BEDDING &
CONTAINER PLANTS

VEGETABLES
& HERBS

PERENNIALS,
CLIMBERS & SHRUBS

Parish Directory

Parish Council

Chairman	Barry Tindall barrytindall@ewelmeaparishcouncil.gov.uk
Vice Chairman	Rebecca Lanigan rebeccalanigan@ewelmeaparishcouncil.gov.uk
Councillors	Nigel Layton nigellayton@ewelmeaparishcouncil.gov.uk
	Sally Stockings sallystockings@ewelmeaparishcouncil.gov.uk
	Paul Stillaway paulstillaway@ewelmeaparishcouncil.gov.uk
	Mike Ibbott mikeibbott@ewelmeaparishcouncil.gov.uk
Parish Clerk	Jo Brock clerk@ewelmeaparishcouncil.gov.uk (Mon-Fri 07510 250508)

County & District Councillors

County Councillor	Gavin McLauchlan gavin.mclauchlan@oxfordshire.gov.uk
SODC Councillors	Sue Cooper 01491 835631
	Andrea Powell Andrea.Powell@southoxon.gov.uk

Ewelme Church

Rector	Rev. Dr Patrick Gilday 01491 838535
Associate Priest	Rev. Marion Harrison 01491 281341
Churchwardens	Sally Fehr sally_fehr@hotmail.co.uk
	Martin Spence martinhsjpenca@gmail.com
Visits Co-ordinator	Sally Fehr 01491 824822
Flower Co-ordinator	Angela Smailes 01491 836964

Almshouses

Almshouse Warden	warden@ewelmealms Houses.org
-------------------------	------------------------------

Ewelme School

Headteacher	Joe Ottaway 01491 839240
Chair of Governors	Jess Readings jessica.readings@gmail.com

Village Groups & Services

Ewelme Society	Carol Sawbridge 01491 833154
Ewelme Store	01491 834467 manager@ewelmevillagestore.co.uk
Village Hall	ewelmehall@gmail.com
Village Preschool	Jo Hoskin 01491 281266
Admissions	01491 613143
Veterinary Surgery	Larkmead 01491 651379
Millstream Surgery	Dr Lucy Jenkins 01491 838286
Millstream Centre	Emma Gallagher 01491 834889
Newelme Club	Angela Harrison 01491 834111
Watercross Painters	Trisha Scott 01491 834734 / 07884 330453

The Village Diary

Wednesday 10th June 7pm

Ewelme Parish Council Meeting
Ewelme Village Hall

Saturday 18th July 10am-12.45pm

Cholsey Repair Cafe
Cholsey Pavilion

Sunday 14th June 2pm-5pm

Ewelme Horticultural Society
Open Gardens

Saturday 1st - Sunday 2nd August

Nettlebed Art and Craft Show
Nettlebed School

Saturday 29th August 6.30pm

Ewelme Village Show
Recreation Ground

Monday 31st August 2pm

Ewelme Village Show
Recreation Ground

Regular Events

1st Sunday in month (April-Sept)

Watercress Beds Open Afternoons
2.00-4.30pm Watercress Centre
£5 Entrance fee (members and children
free) Teas available, no dogs please

2nd Friday in month

Newelme Club - Afternoon Tea
Everyone welcome
2.30pm Village Hall

Every Wednesday

MUGS - Coffee Morning
Everyone welcome
10.20-11.45am Shepherd's Hut

3rd Sunday in month

'Break Out' - St Mary's Church
11am Family friendly service

The Ewelme News is published **bi-monthly** by the Ewelme Parish Council. The copy date for the next issue is **15th July 2026**. Please send your contributions to the editor, Tash Troth at tashtroth@outlook.com

EWELME VILLAGE HALL YOU CAN HIRE THE VILLAGE HALL

Main hall maximum of 120 seated, 96 with tables
Multimedia projector and sound system available

Full stage with lighting - Free Wifi

Kitchen: Double cooker, microwave, hot water
dispenser, dishwasher and fridge

BOOKINGS AND INFO

EWELMEHALL@GMAIL.COM



Ewelme Parish Council



Notes on Parish Council meeting held on 23rd April & 13th May 2026

The purpose of these notes is to summarise some items discussed at a recent Parish Council meeting, there is no intention to duplicate the minutes, which can be viewed on the PC website at www.ewelme-parish-council.gov.uk. Not all matters discussed at the meeting are covered here.

Annual Election of the Chair and Vice-Chair: Barry Tindall was re-elected as PC Chair and Rebecca Lanigan was re-elected as Vice-Chair.

Councillor responsibilities: The Councillors agreed which groups and responsibilities they would be assigned to for this council year. Specific roles can be viewed on the PC website.

PC Grants and Community Infrastructure Levy (CIL): Various organisations applied for grants from the annual PC grant budget and also the CIL, which needs to be allocated by the end of the year. Successful grants can be viewed on the PC website.

Annual Parish Meeting (APM) 13th May 2026

Village Hall Management Committee (VHMC): The topic for the APM was the recent resignation of the current VHMC. The VHMC currently consists of 5 Trustees, the VHMC needs new trustees to keep operating. This was discussed at length. Three members of the public said they may be interested in joining the committee and will set up a meeting to discuss the roles within the committee with the current Chair. If you are interested in becoming part of the management team, please email the Clerk.

Ewelme history website: Y. Solomon thanked the PC for their support with the website. It had approx. 3,000 visitors this full year. The most popular page being 'village history,' 40% came directly via the URL. Around 80% of visits are from the UK, the next most popular was 5.5% from the USA. About 50% of views are from a smartphone. The archive has produced a book about Alyce Chaucer and a village interactive trail booklet, which is very popular.

The late John “Ian” Grant

Ewelme Parish Council wish to acknowledge all the voluntary work Ian did for the village over the years. On duty/formal occasions during his long service in the Royal Air Force he was always John. Otherwise he was “Ian” - the Scottish name for John. Ian was held in very high regard by the RAF for his high standard engineering skills and was selected to work on the Queens Flight for which he was awarded a medal. In time his knowledge proved to be of benefit to our village. Examples are:

Help villagers with car problems. Take the play area swings to his garage, dismantle, weld worn chain links and re-install. Service the tractor each spring for the mowing season, cleaning, servicing, re-greasing and covering up the gang mowers for winter. Patching the rust ridden roof of the tractor’s shipping container “garage” as rainwater would pour in on the tractor. Weld broken metal benches at the sports field and pavilion. The day Peter Lemaire phoned to say the tractor with gang mowers had come to a stop on the sports field. Run out of fuel. Re-fuelled, then a two person job to bleed the fuel injectors – the trusty 1953 Massey Ferguson soon spluttered back into life! In a drought, the cricket team need to water the wicket area but the water supply failed. Ian dug down to reveal a fractured pipe - water soaking away to the Common. Isolate supply? Stop cock seized. Collier’s for parts. Job sorted! Low branches around the sports area were painful and dangerous to Peter’s face when mowing. Ian slowly drove the tractor while another person balanced on the back with a pair of croppers. Branches were picked up on a second circuit. An urgent job? – it would be dealt with there and then BUT, OH MY - **ONE EXCEPTION..... NO MATTER WHAT, IAN WOULD NEVER LIFT A FINGER WHEN SCOTLAND WERE PLAYING ENGLAND FOR THE RUGBY CALCUTTA CUP!** I am sure his response would have been “IT CAN WAIT”!

The times he helped clearing weed from the Kings Pool and the brook on Saturday mornings. Spread new bark in the play area. Sand down wooden benches in the village and on the common and apply several coats of preserver just as he did to the EPC Green Lane notice board. Drilled and attached cords to new waste bin lids as they always blew off resulting in litter falling out, blowing around and birds helping to spread it. Wash/scrub our village name signs, cattle and speed signs. For decades mowing a long section of the grass verge in Green Lane and digging back the ever encroaching soil and grass otherwise parents had to go in the road with the pushchairs. Help for hours recording results when EPC were using a SID device in the village.

Two Saturday mornings felling 9 dead/dangerous trees with chain saws on the roadside at the end of the common. Villagers cut them up and took logs home. (The road was closed by “marshalls” for a few minutes 2 or 3 times as each tree came down on the road and was lifted onto the verge – a brief explanation why - and never a moan from an occasional road user!) It probably saved EPC a lot of time, money, avoided long bureaucratic assessments, Highways road closure and long delays. EPC thanks to all the volunteers HOWEVER EPC does NOT approve such actions – Health and Safety.

Just a selection of many tasks that Ian, as a Ewelme “action man”, quietly did in and around our village and we know that for Keith Fletcher, it was always a privilege and a pleasure working on these jobs with Ian despite Keith and many who knew Ian often failing to understand what on earth Ian was saying due to his very strong broad Scottish Galashiels accent of which Ian was very proud.

And the cost to our council and our community? NO CHARGE.

Thank you Ian. May you Rest in Peace.

Keith Fletcher

Cat Lane pedestrian safety

Unfortunately there have been further reported incidents of dangerous driving along Cat Lane and Parsons Lane.

In an effort to try and improve immediate pedestrian safety, we are going to arrange for a Speed Indicator Device to be positioned at the entrance of Hampden Way. The device will flash up vehicle speed and so, hopefully, encourage more responsible driving as vehicles enter the village. The device will also collect valuable data (number of vehicles, average speed, peak times etc) to enable us to build up our longer term appeal for improved infrastructure along this busy route. We are keen to collect as much relevant data as possible. Therefore please do report any incidents of pedestrian safety to pavementworkinggroup@outlook.com

We are also planning to complete a further tidy up down Parsons Lane, into the village, to provide clearer access for pedestrians to be able to walk on the verge into the village. We will continue to update on our progress - in the meantime, please do make contact if you need any further information about our current plans.

Calling local artists!

The Nettlebed Art and Craft Show returns for 2026.

We are delighted to announce the Annual Nettlebed Art & Craft show will be taking place on Saturday 1st and Sunday 2nd August 2026 at Nettlebed School - a wonderful weekend celebrating local creativity, talent, and a great slice of cake.

Come along to enjoy a wide variety of artwork, handmade crafts, and exhibits from local artists and makers. Refreshments will be available, and everyone is warmly welcome to browse and maybe fall in love with a painting.

We are also keen to welcome new local artists and craftspeople to exhibit their work this year. Whether you are an experienced exhibitor or showing your work for the first time, we would love to hear from you - please email Nettlebedas@gmail.com to more info and entry forms.

Proceeds from the event will go towards supporting local charities and community causes.

Ewelme Horticultural Society Open Gardens



Once again we are delighted that there will be a varied selection of beautiful gardens open this year in Ewelme on 14th June 2026 from 2-5. Included will be some gardens backing on to the watercress beds as well as The Pottery, Chantry House and Hill House. Also open will be the allotments and gardens at the Cloisters as well as the allotments at Suffolk House.

Teas with homemade cakes will be served at the Watercress Centre and the Ewelme Village Store. Entrance to the gardens is £5 per person and accompanied children are free. Parking will be available. Tickets and maps are available from any participating garden and proceeds go to support Ewelme Village Show which takes place August bank holiday Monday.

For any information please contact [Linda Ichilcott2002@yahoo.co.uk](mailto:LindaIchilcott2002@yahoo.co.uk)

Linda Chilcott

Ewelme Village Hall Committee



The Village Hall is a very important village asset that is well used by the community, local groups and a venue for many village events.

The committee now urgently needs to recruit new members to be able to continue the management of the Hall on behalf of the village.

Are you able to spare 1-2 hours per month to support this very important village asset?

If you think you can help, please contact clerk@ewelme-parish-council.gov.uk for further details.

Waste Survey

Residents in South Oxfordshire and the Vale of White Horse are being invited to share their views on local waste, recycling and street cleaning services through the 2026 annual survey. Feedback from last year's 2,100+ respondents led to service improvements, including better bin handling, enhanced street cleaning checks and clearer recycling guidance. The new survey offers another opportunity to help shape future services and is open until 4 June 2026.

Take part here: southandvale.gov.uk/WasteSurvey



DIRTY CARPETS, UPHOLSTERY, RUGS

Unbeatable results

Most carpets dry within the hour

Removes almost all spots and stains

GRIMEBUSTERS

www.grimebusters.co.uk • 01491 670013 • 01865 726983

Alyce's Orchard

Do you have an especially good, older fruit tree?

Ewelme Almshouse Charity (also known as the Ewelme Trust or God's House in Ewelme) is working with almsman John Brannan, Ewelme Parish Council and other villagers to create a small orchard on the green outside of the school, which is owned by the Charity.

There are already venerable apple and pear trees (which are soon to receive some much-needed attention), a walnut and some hazels (which also need some attention). The Charity is happy to give permission for villagers to help themselves to the fruit, which is wonderful.

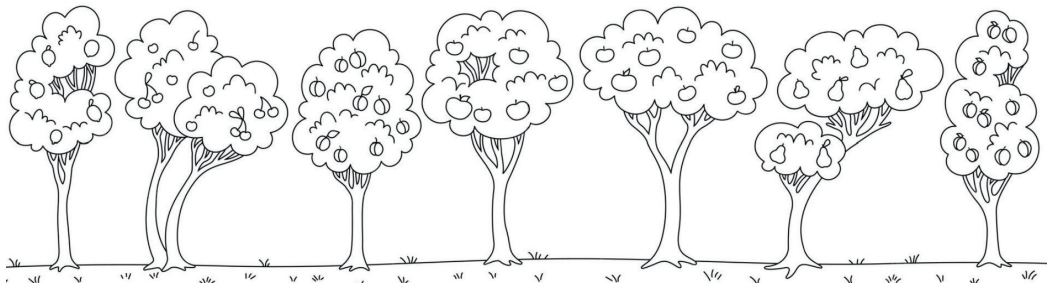
But we would like to plant up to 18 more fruit trees (apple, pear, plum, damson and some nut trees). As they mature, we hope that almspeople, school children and villagers will enjoy the fruits as they ripen, and of course the blossom in spring. Wildlife, especially pollinators and birds will also appreciate the new trees.

But what trees should we plant? We are especially keen to know what already grows well in the village. So, if you have a particularly successful fruit or nut tree, especially if it is older, please could you tell us the variety, rough age and height? Thank you.

Andrew Walker, Mark Powell, John Brannan, Barry Tindall and Tim Wilson

tim.wilson@ewelmealmsouses.org.uk
07866 491674

What does the "Ewelme Trust" do? Find out at www.ewelmealmsouses.org.uk



Reflection for June

Many, many years ago, when I was in still in the juniors, I had a teacher called Mrs. Randle. To my young eyes she was possibly the oldest women alive and I was very frightened by her harsh mannerisms and strict methods of teaching. Looking back, I think that year was the worst of my school years. But there was one thing she said that has always stayed with me. That the saddest two words in the English language were “if only”. By themselves “if” and “only” carry no connotations of sadness but put them together...

“If only I had stopped to fill up with petrol at the last garage we passed.” “If only I hadn’t eaten the whole box of chocolates in one go.” “If only I hadn’t said those words.”

“If only” implies regret of things past. Things we wished we had or hadn’t said or done or situations we found ourselves in beyond our control and through no fault of our own.

It seems to me that we have forgotten that words and actions have meaning and power. We react instead of act and we often speak before we think about what we mean to convey. We seem to no longer choose our words and actions with care or consideration for others. In the film “A man for all seasons” a 1966 film adaptation of the play by Robert Bolt, (a biopic of Sir Thomas More, who endorsed the divine right of the pope over Henry VIII when the king planned the dissolution of the Catholic church) both words and actions carried meaning and power. And while, in this country, we no longer have to worry about capital punishment for wrong words and actions, we need to develop awareness when using modern media i.e. the internet and social networking sites or travelling abroad.

So how do we stop reaction and move towards action? How do we combat regret?

What is in the past is done and cannot be changed. What can change are our reactions. Not just by changing how we consider our words and actions but by considering the words and actions of the people around us. What is it that they are truly trying to convey? Why are they acting in such a manner?

And if we can move from the “if only” regrets of our lives to the “maybe” possibilities of today and the hope for tomorrow, this world may become a little less daunting and my scary Mrs. Randle can finally fade into the past.

And so from the “if only the weather had been a little warmer this June” to maybe July will bring the summer sun, I wish you warm a sunny days.

Rev. Marion Harrison

Ewelme Hootenanny '26

Last August Bank Holiday over 250 people joined together, brought a picnic, bought drinks at the bar and enjoyed our first ever Hootenanny – “a freewheeling social and musical event.”

It was fantastic to see how well the event was supported, to see so many local (and not so local) families enjoying an evening out in the sunshine. It was also great that the monies raised from the Hootenanny were all donated to the Village Show contributing to its running costs – and thus helping ensure the continuation of this great village event.

We are now planning Hootenanny'26 and as with last year will make the event free on entry, hoping to welcome as many people in the village as possible.

Please bring your own picnic, make a donation, buy drinks from the bar, brownies from the pudding station and reserve a table (essential if you want to sit down!).

Local band TRAGIK who provided great 70s/80s will be on hand again to entice you onto the dance floor, this time supported by the wonderfully talented Laurianne Chusseau.

Set a date in your diary for Saturday 29th August. If you'd like to come along, let us know for numbers - if you'd like to reserve a table contact ewelme@icloud.com (£10 per table).

Geoff Watts



Ewelme & Benson Cricket Club

Ewelme and Benson Cricket Club is delighted to share that its cricket nets have been successfully refurbished earlier this year, thanks to generous donations and grant funding. The improved facility will provide a valuable space for players of all ages to develop their skills and enjoy the game.

Contributors and members of the club committee celebrated the official opening by Lord Jay on Sunday 10th May. The club extends its sincere thanks to everyone who supported the project and helped bring the refurbishment to life.



Upcoming Fixtures

Date	Opposition	Venue	Time	Teas	Format
05/06/2026	Kings Head	Home	6	No	20
07/06/2026	Harwell	Away	1	Yes	35
12/06/2026	The Hut Match	Home	6	No	20
14/06/2026	Cholsey	Home	1	Yes	35
19/06/2026	Warborough	Home	6	No	20
21/06/2026	Presidents	Home	1	Yes	35
26/06/2026	Sydenham	Home	6	No	20
28/06/2026	Stonor	Away	1.3	Yes	35
05/07/2026	Islip	Home	1	Yes	35
10/07/2026	Nettlebed	Away	6	No	20
12/07/2026	Brightwell-cum-Sotwell	Home	1	Yes	30
17/07/2026	Medmenham	Home	6	No	20
19/07/2026	Swyncombe	Home	1.3	Yes	35
24/07/2026	Warborough	Away	6	No	20
26/07/2026	Ibstone	Away	1	Yes	35
02/08/2026	Cholsey 6 a side	Away			
09/08/2026	Oxford University CC	Away	1	Yes	40
16/08/2026	Reading University	Home	1	Yes	35
23/08/2026	Nettlebed	Home	1	Yes	35
30/08/2026	Watlington	Away	1	Yes	30
05/09/2026	Nem's Memorial Fixture	Home	11	NA	35
06/09/2026	Fiddlers	Home	1	Yes	35
13/09/2026	FFTMCC	Home	1	Yes	35
20/09/2026	Ipsden	Away	1.3	Yes	35

The right to have the wind in your hair...in Ewelme

Founded by Olle Kassow in Copenhagen in 2012, **Cycling Without Age** (CWA) is the simple but powerful idea of using a trike to take older, more isolated, people out for a ride - to cheer them up and give them some fresh air. It was immediately clear what a great idea it was. There are now 6000 trikes operated by 4500 volunteer groups in 41 countries....and now in Ewelme.

Local Wallingford co-ordinator Mick Heath MBE, former bomb disposal expert, having helped start a CWA group in Inverness, moved locally and started another CWA group in Wallingford.

His enthusiasm means we have five trained and DBS checked Ewelme villagers- Andrea and Mark Powell, Paul Humphrey, Tim Fenn and Tim Wilson, and a trike of our own (on loan- if we use it then that is likely to become permanent). Blankets, waterproofs, sunscreen, conversation and the occasional joke are all provided as needed.



Who we're supporting

Cycling Without Age provide rides to the elderly and frail - anyone that would benefit from a fun ride in a trike around the area. Our biggest users are care home residents, day centre members and supported living residents. A bigger challenge is the large number of socially isolated members of the community. These folks have the greatest need - but finding them is a challenge.

Would you, or someone you know, like to be taken on a trike ride?

Get the wind in your hair, see our lovely countryside and join all the thousands of Cycling Without Age users who feel immeasurably better.

Contact Mick Heath on wallingford@cyclingwithoutage.co.uk

Find out more at cyclingwithoutage.org.uk

Howard Chadwick Funeral Service

A life well remembered lives on

Established 1991

Howard Chadwick Funeral Service are here to support and guide you. Caring for families of all faiths since 1991 in Oxfordshire and the surrounding areas.

Our experienced and friendly team are available 24 hours a day by telephone or you can arrange a home visit.

- 24 Hour Service
- Bereavement Advice
- Transparent Pricing
- Private Chapel of Rest
- Floral Tributes
- Memorial Masonry
- Home Visits
- Prepaid funeral plans

Oxfordshire

01491 825222

33 Benson Lane, OX10 8ED



chadwickfuneralservice.com




Live-in care you can rely on

**Friendly and flexible
live-in care throughout
Oxfordshire.**

**Our local team of care
professionals can help with:**

- Meal preparation
- Medication
- Personal care
- Companionship
- Help around the home
- And much more...

To find out more call:

 **01235 645 015**

GoodOaks
Quality Care at Home

From Ewelme House to Ewelme Cottage - 13,500 miles under sail

Ruth Page, a guide at Ewelme Cottage, from 1968 a heritage museum in Auckland, visited the village last July expressly to see Saffron House and the church, both connected to the Victorian builders of New Zealand's Ewelme Cottage. I promised to revisit the Cottage again this year to photograph artefacts taken from Ewelme House [now Saffron House] to Auckland in 1850. Oxford born orphan Blanche Hawkins [1819-1912], lived from 1836 at Ewelme House with her widowed aunt Lady Charlotte Taunton. In 1842 Blanche was married, in Ewelme church, to clergyman Vicesimus* Lush (the 20th* surviving child of his father's three wives!) In 1844 Lady Taunton died and Blanche cleared Ewelme House of her aunt's belongings.

Vicesimus was a popular curate at Faringdon church from 1843 to 1849 but had fallen foul of church politics which thwarted his promotion. Determined to advance in his ministry, and being inspired by the missionary zeal prevalent at the time *'to preach to the unconverted heathen of the South Seas'*, he wrote to Bishop George Selwyn in Auckland in 1849 for a position in New Zealand. This was granted, and Vicesimus set about raising the necessary funds for the voyage. His family now consisted of 7 yr old Blanche, Charlotte, Mary and baby Charles, plus a servant, 'Betsy' Sainsbury. (Five more children were born in New Zealand). Vicesimus and Blanche wound up their affairs and for their long journey chose the ship the 'Barbara Gordon' a 338-ton barque under the command of Captain Lilley. She set sail from St Katherine's Dock on May 14th, 1850, and reached the Lizard on the 23rd. Vicesimus wrote in his diary *'At 10.0 pm saw the Lizard light, far, far astern of us - the last sight I shall probably ever have of dear old England - I now turn my gaze for the headlands of New Zealand.'*

It was an arduous five-month voyage, initially they suffered bouts of debilitating seasickness and often alcohol-fuelled rowdiness amongst the passengers - the miscreants being severely chastised by Vicesimus. He preached Sunday services and



Lady Taunton's chamberstick (candle stick), a handsome writing box, one of two papier-mache lacquered black trays

tried, unsuccessfully, to master a Mauri Grammar, whilst Blanche schooled the children. Baby Charles was teething. A fellow passenger's diary uncharitably noted *'We have a great nuisance on board, the clergyman's baby, the dear little duck screams the whole day and seems to possess the most powerful lungs - and if the kindest wishes of the passengers had been granted, he would long ere this have been consigned to the tender mercies of the deep.'*

The Lush family stepped ashore in Auckland on October 10th, 1850. The gamble proved to be a beneficial career move, as Vicesimus was determined to stay in his adopted country to prosper in his ministry. In 1863 he bought land in Parnell, Auckland to build a kauri hardwood family home which Blanche nostalgically named Ewelme Cottage. After his death in 1882 it became Blanche's permanent home for her 30 years of widowhood. Although far away from her homeland, Blanche would have treasured the few items taken on the perilous sea journey as reminders of her young life with her aunt at Ewelme House.

Carol Sawbridge - Ewelme Village Archive

Dawn Chorus Walk



As we enter May birdsong reaches a crescendo, particularly at first light. To mark this special time of year Benson Area Nature Group organised its first dawn chorus walk on Saturday May 2nd.

The walk started from Cow Common at 05.00 by which time Robins, Blackbirds and Song Thrushes were already in full song . 44 early risers enjoyed the event, some with binoculars and their Merlin bird

identifying app, others with just their eyes and ears at the ready. In three groups, each with one or two experienced bird surveyors as guides, the walk took in local fields, woodland and scrubland arriving at the Ewelme Watercress Centre for a welcome breakfast some two hours later. We are blessed with a good variety of bird habitat around Ewelme not least the scrubland around the Grundon site. In total there were 49 confirmed bird species identified plus 7 picked up by Merlin but unconfirmed by the guides. Some of the less usual confirmed birds were: Corn Bunting, Willow Warbler, Lesser Whitethroat, Garden Warbler and Cuckoo.

Old Father Thyme

VILLAGE ENVIRONMENTAL SERVICES

Proprietor: Dennis Cook

BLOCKED DRAINS CLEARED

REASONABLE RATES

**NO EXTRA CHARGE FOR EVENING,
WEEKEND OR BANK HOLIDAY CALL-OUTS**

24 HOUR POLITE, COURTEOUS SERVICE

C.C.T.V. DRAIN SURVEYS

9am - 6pm

07850 635 844

All other times

01296 624 221

Full Public Liability Insurance

DOMESTIC DRAIN SERVICES

Potholes – and More

Regular readers of *Ewelme News* may be aware that I am a *FixMyStreet Superuser*. I haven't contributed anything about this for quite a while – so it's time for a reminder!

FixMyStreet is a free service provided by the charity *MySociety*. There is both a website and a mobile phone app which allow anyone to report road defects *via* the internet. These are passed on immediately to the local highways authority – Oxfordshire County Council in our case – for action.

Oxfordshire has gone a step further by designating volunteers nominated by their local Parish Council as SuperUsers. This means that a SuperUser can investigate a report and, in most cases, order a repair to be made directly with the County's contractor. There are several advantages to this:

- County Highways become aware of the need to make a repair much earlier than they otherwise would do so. With nearly 3000 miles of highways and almost 2000 miles of footways and cycleways, a limited number of staff cannot be aware of all the problems in the network. So, for the most part, they need users to tell them! And the earlier they are reported, the sooner they can be fixed.
- SuperUsers can free up Highways Officers from having to inspect every report before ordering a repair. Speeding up the process again.
- SuperUsers can order repairs to be made directly with the contractors, bypassing some of the administrative process and speeding up things even more.

To help us do these tasks, we have several “tools”. We get daily email alerts of reports and are able to see a map of defects within our designated area through the *FixMyStreet (FMS)* website. We have an Oxfordshire County Council hi-vis jacket and some spray cans to mark defects that have been ordered for repair to allow the contractors to identify them. A special section of the *FMS* website allows us to enter further details of the defect and to place an order for its repair if appropriate. There is then a window of 28 days during which the defect should be repaired – in particularly hazardous cases, this will be 2 or 24 hours.

For safety and practical reasons, there are some restrictions placed on us. We can raise work orders for:

- Potholes at least 40 mm deep (20 mm on footways and cycleways) and 150 mm in length and width. You can argue about “a stitch in time”, but that's the rule.
- 1 – 5 displaced kerb stones or a 1 – 2 m length.
- One or more damaged, missing, raised or misaligned paving stones.
- Blocked drains or gullies – but not surface (e.g. leaves) blockages – that's the District Council's responsibility.

We are not allowed to place orders or mark defects on A-roads or where the speed limit is above 30 mph. But that doesn't mean that we or you can't report them and also things like hanging branches, damaged or missing road signs.

Here are a few do's and don'ts.

- **Do** report any highway, footway or cycleway defects, preferably using the *FMS* app, but otherwise the web version or failing that or for urgent and very hazardous defects, direct to Highways (see below). The report will show up on the *FMS* site map.
- **Do**, if possible, take up to three photos of the defect, which show the severity and size of the defect and something to locate its position (e.g. a house opposite or a bus stop).
- **Do** locate the position of the defect as accurately as possible on the map. The mobile phone app will do this using the GPS.
- **Don't** take selfies.
- **Do** provide as much description of the nature of the defect, its location and size (length, width, depth) as possible.
- Don't assume that a defect that has been there for several weeks has been reported by someone else.
- **Don't** make facetious remarks or ones implying that the Council employees or the contractors are lazy or incompetent. They are under a lot of pressure and such remarks just serve to demoralise them.
- **Don't** paint lines around a defect that you have found. It is counterproductive and indicates that a repair is on its way when it isn't.
- If you are comfortable, **Do** register your name, email address and phone number on the *FMS* site. This will allow the system to notify you of progress with the repair or to request further details if necessary. And you will be able to see the status of all of your own reports.
- **Don't** use *FMS* to report things that are SODC's responsibility (e.g. litter or flytipping) or Thames Water's (e.g. water main or sewage leaks). It's frustrating, but OCC can't forward your reports to other bodies. See contacts below.

So that's about it. The *FMS/SuperUser* system speeds up the process of identifying and repairing road defects and makes our Council Tax go further. What's not to like?

Contacts

FixMyStreet web address <https://fixmystreet.oxfordshire.gov.uk/>. Outside Oxfordshire, you can use fixmystreet.com.

FixMyStreet app Search on *Google Playstore* or *Apple App Store*.

Oxfordshire Highways highwaysengagement@oxfordshire.gov.uk. Use this for urgent or very hazardous situations or where a defect has been declared fixed, but it is not, or for a very poor repair. Use the ENQ number in the report to identify it. EMERGENCY No. (e.g. fallen tree across the road) 03453 101 111.

Thames Water <https://www.thameswater.co.uk/> or 0800 316 9800.

SODC southoxon.gov.uk and follow Pay.Report.Apply or phone 01235 422 422.

David Cooper

BinDays – find out when your bins will be emptied

SODC has launched a new Web App called BinDays, which will tell you exactly which bins are being emptied on which day, and what you can put in them. The App can be downloaded by following a link on <https://www.southoxon.gov.uk/BinDays>. It collects no user data but provides a handy reminder when dates change due to public holidays.

New Chair for SODC

All things being equal, at the Annual Meeting of South Oxfordshire District Council, Andrea will be elected as Chair of the Council for the municipal year 2026-27. Cllr David Rouane, formerly the Leader of the Council, is likely to be elected as Andrea's Vice-Chair. As this will be the last official year that SODC operates fully as a local authority (with Local Government Reorganisation taking effect after local elections in May 2027), we are hoping to raise as much money as possible for the Chair's charities and to thank as many community and volunteer-led organisations as possible for their service to their communities.

Grants News

The "Everyone Active" grant closed before the deadline as the funds were fully allocated to qualifying applications. The Council's Capital Grant scheme opens on 26th May and the Performing Arts Fund will launch on 20th July, so it's time to start preparing your bids!



Sunday 21 JUNE

2 - 5 pm

Ewelme Church

Outside if Sunny

Roses In Memory Supporting the
RAF Benevolent Fund

**Caroline Kinash
Physiotherapy**

Are you in pain?

Back, neck, knee, hip pain

Sports injuries

Treatment to relieve your pain may include **soft tissue massage, stretching, joint mobilisations, acupuncture, electrotherapy, corrective exercise, posture awareness, and advice** on how to overcome pain in your daily activities

**Book your appointment at
www.carolinekinashphysio.com
07786233232**

Ewelme Village Store & Tea Room

As we head into summer, it's been wonderful to see so many familiar faces in the shop and tearoom, whether popping in for essentials, meeting friends for coffee, or enjoying a well-earned treat after a village walk.

Local Supplier Spotlight – Brightwell Vineyard 🍷

We're delighted to stock a selection of wines from Brightwell Vineyard. Locally produced wines have been proving very popular recently, especially the rosé now the warmer weather has arrived.

Whether you're planning a summer picnic, a barbecue, or simply relaxing in the garden, their wines are well worth trying. We're proud to support such a fantastic local producer.

Tea Room Highlights 🍞☕

We've recently introduced freshly baked croissants on Sunday mornings as part of our Sunday brunch menu; perfect alongside a coffee and the Sunday papers.

We're also pleased to now offer gluten free sandwiches in the tearoom, helping ensure there's something for everyone to enjoy.



A Big Thank You

A huge thank you goes to GEC Electrical, who worked tirelessly to help us get to the bottom of our recent electrical challenges in the shop. After a rather stressful week of random power trips turning everything off unexpectedly, they helped identify and resolve the issue for us. We're incredibly grateful for their support and perseverance.

Seen Around the Village 🐎

We had considered starting a regular "Dogs at the Shop" feature... but our latest four-legged visitors had slightly longer legs than expected! Two horse riders recently stopped by for bacon rolls and hot drinks, much to the delight of customers and staff alike. It certainly brightened everyone's morning.



A community shop run by volunteers...

Our AGM will take place on Thursday 11th June 2026. Full details are being sent directly to shareholders.

We currently have 403 shareholders - supporters of the shop who have invested £10 in our infrastructure and consequently have a say in the running and future of the shop. If you'd like to support the shop and become a shareholder, you can find more information at <https://www.ewelmevillagestore.co.uk/buy-a-share> or ask for a form in the shop.

Our management committee is currently running with 4 people out of a total of 8 possible. We meet four times a year to discuss finances and ideas. We allocate responsibilities by task and individual strengths e.g. you might be able to write promotional copy, fix our PC, organise the AGM or produce posters. Any of the above would be great. Joining the committee doesn't have to be onerous or complicated. If you have a skill that you feel able to offer, we would love to hear from you.

Please email manager@ewelmevillagestore.co.uk for an informal chat.

Thank you, as always, for continuing to support your village shop and tearoom.

Cara Chapman

Drum Landscaping



- ▶ Hard and Soft Landscaping
- ▶ Fencing ▶ Garden Clearance
- ▶ Hedge Cutting
- ▶ Grass Cutting ▶ Turfing
- ▶ Power Washing ▶ Winter Gritting
- ▶ Licensed Waste Carrier ▶ Insured

Call Nick - Home: 01235 859229

Mobile: 07922 701634

Email: ndrumlandscaping@gmail.com

CALL PLUMBING HEATING

TAPWASHERS & PLUMBING
Repairs • Installations

BOILERS, COOKERS, GASFIRES
Serviced • Repaired • Replaced

CENTRAL HEATING SYSTEMS
Installations • Cleansing • Servicing

FULL BATHROOM INSTALLATIONS

UNDERFLOOR HEATING

EMERGENCY REPAIRS

Best Prices, Service and Reliability



LEE BECKETT
01491 614233 or
07773 168120

www.walkinshowerbaths.co.uk

SODC Update

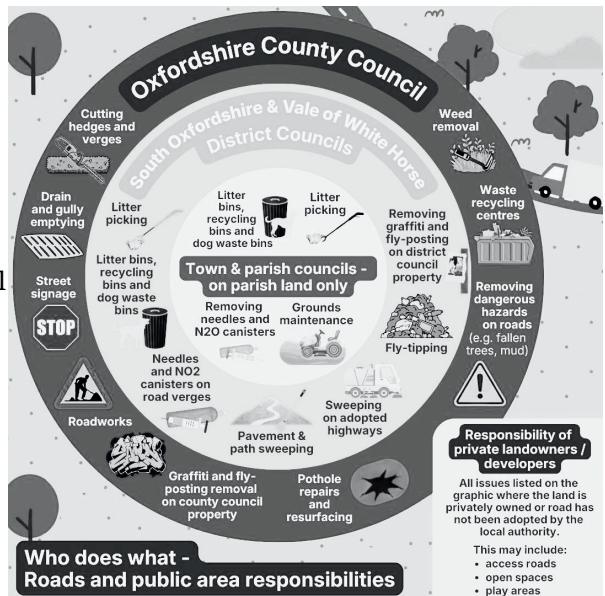
Litter

First of all, a big thank you to all those who took part in the seasonal litter pick back in March to tidy up the village and a special thank you to all those who carry out litter picking on a regular basis making the place look better all year round. It is much appreciated. I was out clearing up the regular dump of used wet wipes (yuk) from the hedgerows on Benson Road recently and it was nice when a car stopped to thank me for my efforts !

Under the Environmental Protection Act 1990, South Oxfordshire and Vale of White Horse District Councils are classed as 'Principal Litter Authorities' and have the responsibility for "maintaining the highway (and adopted highway) and ensuring that the relevant land within their areas is kept clear of litter and refuse so far as is practicable."

SODC and its waste collection and street cleaning contractor, Biffa, use the Defra 'Code of Practice' to assess the type of cleaning required. Biffa is therefore employed to carry out the following tasks:

- Adopted highway, pavement and path mechanical sweeping
- Litter picking
- Litter and dog waste bin emptying (from bins belonging to the District Council on the adopted highway.)
- Deep cleaning including leaf fall – to be arranged in conjunction with the parish council
- Fly tip removal (including coordination with private landowners)
- Graffiti and fly posting removal from District Council owned property
- Dead animal removal



Town centres with heavy pedestrian and/or vehicle movements are cleaned on a daily basis. Other areas are cleaned when it is needed. So if you think a particular location is in need of some attention, please email Biffa at admin.southoxford@biffa.co.uk or call them on 01235 422123 giving them details of the location including the street name and ask them to clear it. Likewise if you come across instances of other

problems they have to deal with from the list above, it would be helpful if you could notify Biffa with details.

Of course if everyone behaved responsibly and took their rubbish home and put it in the appropriate bin, all this extra work would not be necessary. If only!

Recycling Update

We are disappointed to report that South Oxfordshire dropped to third place amongst English Council areas for our recycling rate for the year 2024/2025 having been top for the previous 2 years. Our rate actually dropped to 61.3% and the national figure for recycling also fell. These figures were for the year ending in March last year so let's try and get back to the top during this current year which has just started! And better still would be to reduce the amount of waste we generate. The County Council has to pay a gate fee of so much per tonne to have our residual waste burned to generate electricity. That fee is quite high so reducing our residual waste would help ease the financial burden on OCC.

New Planning System now online!

If you ever wish to view or comment on a planning application, the platform used by the Council to manage this process has now been upgraded, so you will notice quite a few changes to the way the system works. The new system brings information together in a much more intuitive way and presents a helpful “dashboard” with all the most important documents and maps easily accessible. For the keenest amongst you, there are a few training videos on the SODC website - see <https://www.southoxon.gov.uk/uncategorised/important-changes-to-planning-and-land-charging-services/>

If you have previously signed up to receive alerts whenever a planning application is lodged, you will need to sign up again and register with an account. This is a very simple process and should take no more than a few minutes.

The interactive mapping (GIS) system used to capture all kinds of spatial information, including Tree Protection Orders, Planning applications, boundaries for special landscapes and so on, is also being upgraded and should be online by the time the Ewelme News goes to print, or shortly thereafter.

Riverside Pool and Splashpad opening on 23rd May!


One thing that will definitely be ready by the time you receive this Ewelme News will be the fabulous outdoor (heated) swimming pool at the Riverside in Crowmarsh, along with the very popular free Splashpad next door. As we write, the Better team is working on cleaning the site and doing all the pre-opening checks to ensure everything is ready to open on the Saturday of the late May Bank Holiday weekend, just in time for the half-term holiday. The best way to find out more about the different sessions and to book tickets is to download the Better App and set up an online account. You can also follow the Riverside Park and Pools Facebook page for up-to-the-minute information.

Registered Osteopath

Mr Rohan Iswariah D.O.

For vouchers & information
please visit our website at:

www.localosteopath.com

 **01491-838866**

An Osteopathic approach to
Treatment for Sports
Injuries, Back Pain,
Headaches, Joint Pains,
Sciatica, Brachialgia,
Arthritis, Tennis elbow,
Pulled ligaments &
Muscles, Musculoskeletal
problems in general



Ivy Cottage | Chapel Lane | Benson | Oxon | OX10 6LU

EWELME PAVILLION

FOR HIRE

For more info and booking
contact the parish clerk

clerk@ewelmeparishcouncil.gov.uk

07510250508



EWELME FREE ENTRY! HOOTENANNY '26 ON THE COMMON

Live music by Tragik with support from Laurianne
Chusseau - plus children's entertainer Bertie Slippers

**SATURDAY 29TH AUGUST
2026
6.30PM - 10.30PM**

Bring your own picnic!

We've got the drinks covered!

To keep the entry free, please support this event by
using the on site licensed bar

Reserve a table (£10) ewelme@icloud.com or at
Ewelme village store

Donations to the Ewelme Horticultural Society

Watercress Centre for hire in a beautiful and tranquil location

Suitable for small group
meetings, social events
and talks. WIFI, screen
and projector available.

**For further information
please contact Ann
Truesdale 01491 835173**

Friends of Ewelme Church (FOEC)

We were delighted to see so many of you at Dr Rowena Archer's fascinating talk about the formidable Alyce Chaucer and her vast amount of property. We are very grateful for your support.

We hope you will be pleased to have this advance notice that on Friday evening, 14th November, Sam Brown and her Ukelele Band will be giving a concert for us. This will be in the church, where there will be room for what is likely to be a very popular event: last time Sam and her Band played for FOEC, the church was absolutely packed. We realise that the Village Hall is situated very conveniently but there will not be enough space on this occasion. We can promise that St Mary's will be as warm as possible on this November evening and we hope to see a great many of you, your families and friends. Look out for further details in due course.

Oliver Morley CBE
Chairman



Have you seen our wildlife-friendly churchyard? Explore the mown paths through the long grass!

The next **Cholsey Repair Café** will take place on **Saturday 18th July** at the **Cholsey Pavilion**. Doors open at 10.00 and close at 12.45. Talented fixers offer help and advice free of charge, to get a wide variety of broken household items back into working order, although donations to cover operating costs are always appreciated. Excellent refreshments are available next door, in the Cholsey Community Café. Further details can be found at www.cholseyrepaircafe.com or you can email repaircafe@cholsey.com.

Interior Decoration - Re-upholstery - New Furniture - Curtains and Blinds
Soft Furnishings - Replacement Cushion Interioers



01235 522770 - info@asnew-upholstery.co.uk - www.asnew-upholstery.co.uk
17 Nuffield Way, Abingdon, OX14 1RL