

# Ewelme News



October/November 2024



Shooting the rapids at the Watercress Children's Activity Day  
(Page 16)



Cynthia Winfield, celebrating every  
minute of her 90th Birthday  
(Page 13)



Village Show  
(Spaceship class)

Page 14

# 250 varieties and colours of basket & patio plants all grown on the nursery

Busy Baskets Nursery trading as:



## Purely Plants



Seasonal Opening:  
April-July & September-November  
7 days a week - See website for details

HANGING BASKET  
SPECIALISTS

BEDDING &  
CONTAINER PLANTS

VEGETABLES  
& HERBS

PERENNIALS,  
CLIMBERS & SHRUBS

e: [andy@purelyplants.co.uk](mailto:andy@purelyplants.co.uk) 01491 833 831 w: [www.purelyplants.co.uk](http://www.purelyplants.co.uk)  
Purely Plants Nursery, 142a Wantage Road, Wallingford, Oxfordshire OX10 0LU

## Live-in care you can rely on



Friendly and flexible  
live-in care throughout  
Oxfordshire.

Our local team of care  
professionals can help with:

- Meal preparation
- Medication
- Personal care
- Companionship
- Help around the home
- And much more...

To find out more call:

☎ 01235 645 015

**GoodOaks**  
Quality Care at Home

# Parish Directory

## PARISH COUNCIL

Chairman	David Solomon	01491598437
Vice Chairman	Barry Tindall	07973702410
Councillors:	Roger Moore	01491 838001
	Nigel Layton	07785244331
	Sally Stockings	01491 839287
	Rebecca Lanigan	07305680761
	Paul Stillaway	07545 309807
Parish Clerk (Mon-Fri)	Jo Brock	07510 250508
	clerk@ewelmepc.org.uk	

**COUNTY COUNCILLOR** Freddie van Mierlo [freddie.vanmierlo@oxfordshire.gov.uk](mailto:freddie.vanmierlo@oxfordshire.gov.uk)

**SODC COUNCILLORS** Sue Cooper 01491 835631

Andrea Powell [Andrea.Powell@southoxon.gov.uk](mailto:Andrea.Powell@southoxon.gov.uk)

Twitter: [GreenAndrea\(@AndreaJPowell2\)](#)

## EWELME CHURCH

Rector	The Rev. Dr. Patrick Gilday	
Churchwarden	Sally Fehr	<a href="mailto:sally_fehr@hotmail.co.uk">sally_fehr@hotmail.co.uk</a>
	Martin Spence	<a href="mailto:martinhjspence@gmail.com">martinhjspence@gmail.com</a>
Visits Co-ordinator	Sally Fehr	01491 824822
Flower Co-ordinator	Angela Smailes	01491 836964

## EWELME SCHOOL

Headteacher	Joe Ottaway	01491 839240
Chair of Governors	Peter Ryding	<a href="mailto:Peter@peterryding.com">Peter@peterryding.com</a>

**EWELME SOCIETY** Carol Sawbridge 01491 833154

**EWELME STORE** [manager@ewelmevillagestore.co.uk](mailto:manager@ewelmevillagestore.co.uk) 01491 834467

**EWELME VILLAGE HALL** Anne Critchley 01491 834403

**EWELME VILLAGE PRESCHOOL** Jo Hoskin 01491 281266

Admissions 01491 613143

**LARKMEAD VETERINARY SURGERY** 01491 651379

**MILLSTREAM SURGERY** Dr Lucy Jenkins 01491 838286

**MILLSTREAM CENTRE** Lindsay Jenkins 01491 834889

**NEWELME CLUB** Angela Harrison 01491 834111

**WATERCRESS PAINTERS** Trisha Scott 01491 834734 or 07884330453

# The Village Diary

## Saturday, 5th October

Dancing and Music. Nettlebed Village Hall  
8.00 - 11.00 pm. (Page 21)

## Wednesday, 9th October

Parish Council Meeting. 7.30 pm in the  
Village Hall. (page 6)

## Saturday, 26th October

Books signing by Christina Hardyment of  
the third book in the Alice trilogy. Village  
Store 3.30 - 5.00 pm (Page 8)

## Saturday, 23rd November

Musical Evening in the Village Hall  
(Page 9)

## Friday, 29th November

Friends of Ewelme Church talk by Hamish  
Cormack CBE. Village Hall 7.30pm (Page 7).

## Regular Events

### 2nd Friday in month

Newelme Club 2.30 pm. Village Hall.

### Every Wednesday

MUGS 10.20- 11:45 a.m. coffee at the  
Shepherd's Hut. Everyone welcome.

### 1st Saturday & 3rd Wednesday in month

Watercress Beds & Nature Reserve  
Volunteer work mornings 9.30-12.30

### 1st Sunday in month May - September

Watercress Beds & Nature Reserve

Open Afternoons from 2 - 4.30 p.m.

The Ewelme News is published by the  
Ewelme Parish Council.

The copy date for the next issue is the  
**19th November 2024**. Please send your  
contributions to the editor:

[sayerann863@gmail.com](mailto:sayerann863@gmail.com)

---

## EWELME VILLAGE HALL

### YOU CAN HIRE THE VILLAGE HALL.

Main Hall maximum of 120 seated, 96 with tables.

Multimedia projector and sound system available.

Full stage with lighting. Free Wi-Fi

Kitchen: Double cooker, microwave, hot water dispenser,  
dish washer and fridge.

**BOOKINGS & INFORMATION : ANNE CRITCHLEY ON 01491 834403**

# Ewelme Parish Council



## Parish Council Meeting held on Wednesday September 11

The idea of these notes is to expand a little on some of the items discussed at the recent Parish Council meeting that are likely to be of greatest potential interest to parishioners; it is not to duplicate or precis the minutes, which can be viewed on the Parish Website at [www.ewelmepec.org.uk](http://www.ewelmepec.org.uk)

**New Councillor** We were delighted to welcome a new Parish Councillor, Paul Stillaway. Paul was co-opted to fill a casual vacancy. Paul will be well-known to many parishioners, having lived in the village for many years. Having lost two councillors due to retirements in the past year, we are now back up to full strength.

**Cow Common flooding** A preliminary report was tabled on the issue of flooding of the recreation ground, which has had particular impact upon the cricket club.

Cow Common has standing and flowing surface water on parts in wet winters; this is a natural phenomenon caused by high water groundwater levels, and is a normal feature of many valleys in chalk areas.

The recreation ground was formed in the 1950's by levelling part of the valley floor, cutting into the sides and raising the centre. In very wet winters surface water gathers and remains on the part of the recreation ground occupied by the cricket pitch. This flooding was particularly persistent in 2024 following the wet winter of 2023-4, and it was July before the cricket club were able to play home games on the pitch.

There is a perception that the waterlogging of the pitch has become more serious and more frequent in the past 20 or so years, compared to the 40 years before that. It has been suggested that the drainage ability of the pitch may have deteriorated, for example by silting-up of land drains.

Ewelme Parish Council, as owners of the Common and the recreation ground including the cricket pitch, has been asked to look into the causes of the flooding and possible remedies for future years. The first stage is to construct a history of the site and the problem, and

### **HOWARD CHADWICK FUNERAL SERVICE**

A Caring Family Owned Independent Funeral Directors

office@chadwicksfuneralservice.co.uk

www.chadwicksfuneralservice.co.uk



24 hour prompt personal attention  
Private Dedicated Chapels of Rest  
Pre-Paid Funeral Plans

33 Benson Lane Crowmarsh  
Wallingford Oxon OX10 8ED



**Golden Charter**  
Funeral Plans   
**Tel: 01491 825222**

to describe the situation. Preliminary findings were presented at the meeting, and a full assessment will be tabled hopefully at the October meeting.

**Alice Chaucer commemoration** An event to celebrate the 550<sup>th</sup> anniversary of the death of Alice Chaucer (founder of Ewelme school and Alms Houses), is being organised by Professor Robert Hazell. An ambitious programme of talks, concerts and an exhibition is planned; up to 300 attendees are anticipated, and the event will take place in a marquee on the recreation ground in May 2025. The Parish Council were happy to endorse the proposal, and to waive the usual fees for use of the pavilion and recreation ground.

**Bus Shelter** Proposals for the use of the soon-to-be-refurbished bus shelter for village display boards were discussed. The plan would be to display material on village history and facilities in glazed display boards. A costed proposal will be presented at the next meeting, in time to apply for a grant from this year's SODC allocation.

**Car Park extension at Cow Common** We have now received pre-submission planning advice from SODC. We need further investigations and reports before we can submit a planning application; these are in hand.

**Memorial benches on Parish Council controlled land** Following a recent request for locating two memorial benches on Cow Common (for which permission was granted) it was recognised that a written policy on such matters would be helpful. A draft will be

tabled at the October meeting.

**Gates on the Common** Parishioners may have noticed that some of the Common gates are in a state of dis-repair, and are sealed off. They will be reopened when grazing finishes for the year in October. We hope that the gates will be replaced by new ones early next year.

**Next meeting** The next scheduled meeting of the Parish Council is on Wednesday October 9 at 19:30 in the Village Hall. Please do attend if any of the above issues are of interest, you have any other matters you would like to raise, or if you just wish to see village democracy in action. The agenda will be posted in advance of the meeting on the Parish Council website ([www.ewelmepc.org.uk](http://www.ewelmepc.org.uk)).

*David Solomon* Chair, Ewelme Parish Council.



- ▶ Hard and Soft Landscaping
- ▶ Fencing ▶ Garden Clearance
- ▶ Hedge Cutting
- ▶ Grass Cutting ▶ Turfing
- ▶ Power Washing ▶ Winter Gritting
- ▶ Licensed Waste Carrier ▶ Insured

Call Nick - Home: 01235 859229

Mobile: 07922 701634

*The Friends of Ewelme Church are hosting*

## **Tigers, Tartan and Tom!**

**A talk by Hamish Cormack CBE**



Friday 29th November 2024 at 7:30pm  
Ewelme Village Hall, Ewelme, OX10 6HQ

Hamish has completed a 36 year career in the RAF that has taken him to challenging environments in the Arctic, deserts and jungles in over 60 countries. He has come and gone from RAF Benson in roles from Flight Commander to Station Commander and is delighted to share unheard anecdotes and thoughts from behind the scenes and beyond. From dancing the Gay Gordons in Kabul to flying Tom Cruise into Trafalgar Square; from helping to protect the 2012 Olympics to losing his wedding ring in the North-West Frontier Province of Pakistan, there are plenty of tales!

Tickets will be £15 per person to include a glass of wine or cordial

Available to buy on TicketSource - [www.Ticketsource.co.uk/friends-of-ewelme-church](http://www.Ticketsource.co.uk/friends-of-ewelme-church) or at the Ewelme Village Store

[friends.of.ewelme.church@gmail.com](mailto:friends.of.ewelme.church@gmail.com)

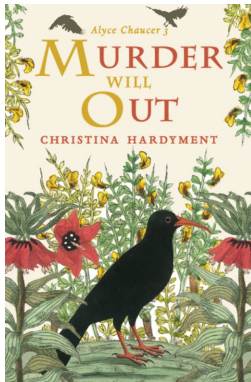
Friends of Ewelme Church Charity No.: 1138727

# Book signing - Ewelme Village Store 15.30-17.00 Saturday, 26th October



Come and meet Christina Hardyment, author of the Alyce Chaucer series of historical thrillers, as she launches her exciting third book- *Murder Will Out*. Buy it in Ewelme Village Store and get it personalised- perfect for a gift. Ewelme's favourite Duchess, continues her adventures.....

*The Dowager Duchess of Suffolk, Alyce Chaucer, the intrepid Tamsin (now her secretary) and the ebullient bookseller Joan Moulton make a perilous winter journey with Sir Thomas Malory to Tintagel Castle in Cornwall during which they are assailed by outlaws and arsonists. They meet friends and enemies old and new – and discover who was responsible for the murder of Alyce's third husband William Duke of Suffolk.*



## Ewelme Village Store Calendar 2025

Thank you to all of the talented photographers for their submissions for the Ewelme calendar last year. It sold very well, contributing to keeping our village shop open. Now is the time to look through your photos and submit again for next year's calendar. Here are a few tips:

- the photo should be in or around Ewelme (doh!); we will need the original photo and location if we decide to include your photo.
- we need representations for each month (last year there were fewer submissions for summer and autumn),
- the photos will be in A4 landscape (we can sometimes crop a portrait format, but it isn't ideal). Please send your photos to [timwilsonhome@gmail.com](mailto:timwilsonhome@gmail.com).

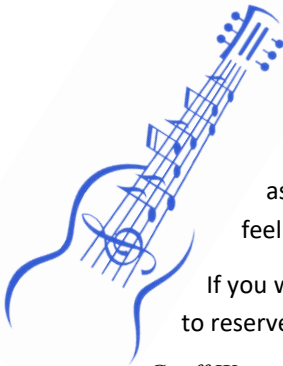
*Tim Wilson* (for Ewelme Village Store)



Thatchings, rising from the ashes, reached the roof stage recently. This milestone event was marked with the traditional Topping Out ceremony when a leafy branch is tied to the top beam and lots of beer is drunk!

## A Foot Tapping Invitation!

Many of you will have enjoyed the Ewelme Music Evenings held in the Village Hall. These have provided a great opportunity for local talent to play and sing as well as raising valuable funds for good causes.



Now that we enter Autumn, I am turning my attention to the Ewelme Music Evening VI – scheduled for **23<sup>rd</sup> November 2024** in the village hall. This time we are raising funds for a very worthwhile cause – the **Ewelme Horticultural Society**. The format will remain as before – tickets £10 per person, licensed bar provided, feel free to bring along your own snacks etc.

If you would like to be included on the programme or would like to reserve tickets, please contact me or Andrea Powell.

*Geoff Watts Ewelme@icloud.com*



## EWELME VILLAGE PRESCHOOL



*A small, unique and welcoming Preschool set in the beautiful village hall in Ewelme. With an engaging curriculum, children have the opportunity to learn and grow in a safe, nurturing environment.*

-  Play-based learning
-  Developmentally appropriate curriculum
-  Forest School
-  Innovative use of indoor & outdoor space
-  Places (incl. funded places) available from 30 months

### CONTACT US

Ewelme Village Preschool, Ewelme Village Hall, The Street, Ewelme, Oxfordshire, OX10 6HQ

 01491 825 483

 ewelmepreschool@gmail.com

 <https://ewelmevillagepreschool.org.uk>

Registered Charity No1067529



# The Village Cricket Club - Then & Now

Every year, the Village Cricket Club challenges the President's XI. In 1964 the match was won by the President's team. The President herself, Marion Nowell-Smith, is seen below with the two teams. The other lady in the photo is none other than Cynthia Winfield who turned 90 this year (see page 13).



In 2024, sixty years on, the match was won by the Village. Captain: Ken Walker and President: Lord Michael Jay both pictured below with their teams.

The Village Cricket Club is very successful playing some 32 matches each year. Hopefully, you will come and support them next year.



Fixture List is available from March 2025. Enquiries 07891 194133  
*Richard Turner*

## NEWELME CLUB AND VILLAGE NOTICE BOARD

### IS THERE A POSTER PINCHER ABOUT?

The Newelme Club is run every 2nd Friday of the month throughout the year. This Friday we had 19 people, also a few coming from Benson enjoying a quiet afternoon chat with friends and neighbours. Tea and homemade cake is also served. Advertising this event, the notices go out around the village the Friday before and all are removed immediately Friday pm after the event. They are only around the village for a week. We have noticed over the months that some of the posters are removed. This month I put up seven notices around the village and when I went to take them down, four appeared to have been removed! They had not blown down. If someone is averse to this event perhaps they would like to talk to me to discuss their feelings.

On another note, would the person who has removed the little plastic box of drawing pins which was on top of the Village Hall notice board, please return it. I will not be replacing it again. Anyone wanting to advertise please bring your own drawing pins. Any stapled adverts will be removed. Thank you.

*Anne Critchley*

## EWELME PAVILION

**refurbished and available for private hire**



**Please contact the  
Clerk for more  
information:**

**clerk@ewelmepc.org.uk**

**or 07510 250508**

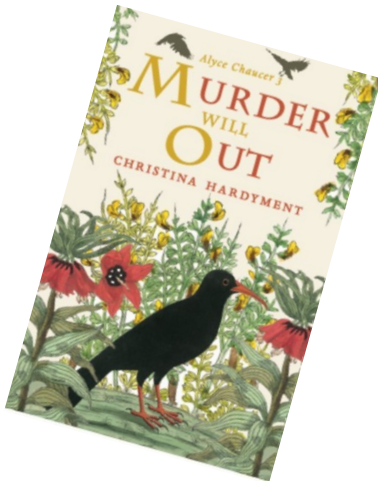


## Seasonal Offerings in the Village Store

**Business has been pretty good in the shop, over the summer, so thank you to all our customers and please continue to support us!**

As our thoughts turn to autumn, we will be stocking fresh supplies of kindling, firelighters and all that you need for lighting those indoor fires and woodburners. The nights are definitely turning chillier. Perhaps your thoughts might be turning to warming casseroles and curries? Our celebrated Swaadish curry sauces are well-stocked and come in several different varieties. How about a nice bottle of red wine to accompany it? We have a choice of several and generally under £10.

If your thoughts are starting to wander towards the Festive Season, how about this little fellow as a present? Or maybe, an elf, a Christmas pud, a penguin or even some hand warmers. Place your orders in the shop as our busy little elves will be working hard with their knitting needles!



### Alice's Murder Mystery

We are honoured to be receiving another visit from local author, Christina Hardyment, on Saturday 26<sup>th</sup> October 15.30-17.00, when she will be signing copies of her new book, "Murder Will Out", the final book in her trilogy on the life and times of Alice, Duchess of Suffolk. Don't miss it!

### Come and Join the Team!

We are in the process of looking for new volunteers to help us out for a few hours either once a week or on an "as needed" basis. It is a very rewarding role, our current volunteers say how sociable it is, chatting to customers, both regular and visitors. The work is not onerous, serving behind the till or putting simple orders together for tea room customers. Full training will be given and you will be putting something back into the community. Ongoing support is also provided until you feel confident. Feel free to talk to anyone currently working in the shop to ask for more information or email: [manager@ewelmevillagestore.co.uk](mailto:manager@ewelmevillagestore.co.uk)

We wish you a happy autumn from the shop staff and volunteers! *Sue Evans*



*Tom provides the musical accompaniment to the guests' chorus of Happy Birthday*

## **Congratulations to Cynthia for reaching such a venerable birthday!**

Over a hundred guests converged on the Village Hall on the 11th August to celebrate Cynthia Winfield's 90th birthday with a lavish party which was organised by Gemma Benoliel.

Cynthia is one of the best-known figures in Ewelme with good reason. Apart from her involvement in a wide range of village activities and volunteer groups, she is in fact the oldest native of Ewelme. Cynthia was born in 1934 to Fred and Bertha Winfield who lived in the middle Forge Cottage in Ewelme. Fred's job was serving the Ewelme Trust as maintenance man of the Almshouse and it is extremely likely that his family had been serving the Trust for many centuries before that.

Winfield is an abbreviation of Wingfield, the name of a family which owned a manor of the same name in Suffolk in the 15th century. The heiress of the senior branch, Katherine Wingfield, married Michael de la Pole, the 1st Earl of Suffolk. When their grandson, William de la Pole the Duke of Suffolk married our Alice Chaucer, they preferred to live in Ewelme rather than Wingfield, and many of their retainers and relatives moved to Oxfordshire with them. As a result, the name Winfield is now found locally as well as in East Anglia.



**Well done Cynthia, keep it up!**

# The Ewelme Horticultural Society

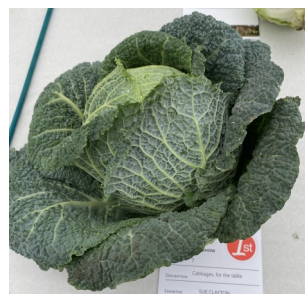
## 42nd ANNUAL VILLAGE SHOW ON AUGUST BANK HOLIDAY MONDAY

The Committee would like to thank everyone who worked so hard to make sure the Show was the success that we've become used to expect.



We thank Stuart & team for collecting the tables & chairs from the Village Hall on Friday evening; all the judges & stewards who gave up their time to judge all the entries, nearly 500 in total; Zoe & family for preparing 50 delicious lunches for the judges, stewards and helpers; Fiona & Alan who admirably took on the role of running the tea & cake stall ably assisted by a rota of willing helpers organised by Sarah. Thank you to everyone who donated cakes, we had an amazing and delicious variety to offer. Our thanks go to Kerry & Dave for running the bar; Rebecca Lanigan who did an amazing job organising the car parking; Tom and his band for entertaining us and the Connolly family who each year leave Winchester at the crack of dawn to arrive in time to start erecting the gazebos, help with stewarding as well as running the skittles and the BBQ. As in previous years Dominic did a sterling job in organising the classic cars. We thank each and everyone of you and apologise if anyone has been left off the list.

*Lin Reader*





*The magnificent tea and cake stall, so popular with visitors and hopeful canines.*



*Off duty!*



*Tom and the Band strike a festive note.*



*Ooooh, we do the hokey kokey!*



*Les Bond and his armful of trophies.....closely followed by Margaret Connolly.*



## Fun & Games at the Watercress Centre

The eighth Dr Anne family activity day was held at the Ewelme Watercress Beds on Thursday 15th August.

The activity day is held annually, in memory of Dr. Anne (Millar) who died in 2013. She served the local community as its GP for three decades and was passionate about wildlife and involving children in the outdoors and nature activities. Twenty primary school aged Children came along with parents or guardians and enjoyed a fun morning of activities in the lovely surroundings of the cress beds.

A moth trap had been set the evening before outside the Centre and the morning kicked off with opening the trap to see what had been attracted to the light. Numbers were a little down on previous years nevertheless, the children and adults, were enthralled with the range of moths (nearly a hundred of about 50 different species) and they were able to handle, carefully, the enormous Poplar Hawk Moths before releasing them to continue their valuable work, pollinating plants.

The activities on offer following the moths included the always popular boats in which the children had to design and build a boat from various pieces of scrap material. The results were later judged on their design and then raced down a partitioned section of the watercress beds. A photo competition with the children supplied with



*The boatbuilders hard at work ....*



*Let's see if it floats!*



*Walking the plank,  
Watercress style*



*Andrew Walker and the bird identity parade.*



*Tom takes a break.*

cross beds cameras and asked to take pictures on the theme of “patterns”. Also on offer were various artistic projects, quizzes and an I-Spy trail and scavenger hunt.

Children could choose which activities they wished and, perhaps

unsurprisingly, the boat building was a hot

favourite. Perhaps we should rename the day “the Dr Anne boat building day”. Following a picnic that families brought along, and ice creams supplied by the Friends of the Watercress Beds, the day culminated with the ever-competitive boat race and prize giving.

A great time was had by children and adults alike, and it is very rewarding for the organisers. It was great to welcome Andrew to the team, and he brought along Keir to help. But to repeat what has been said before, we are desperate for new volunteers to come forward.

It has been a busy time on the cress beds as, as well as the normal work, the Chiltern Society (CS) held a one of their “volunteer thank you days” at Ewelme on September 3<sup>rd</sup>. Apart from



*The smart new interpretation board.*

a slight hiccup over the late arrival of the pizza van which supplied free food it was good to welcome around 60 volunteers who work on various CS sites. Especially gratifying for all our cress beds volunteers was the award of outstanding volunteer group for 2024, by the CS – very many thanks to all our helpers and the two Green Gym organisations without whom the beds would look very different. You might also note, if you are passing, the new interpretation board near the picnic bench outside the centre.

*Tom Stevenson*

## Neil Blake – a friend and asset to Ewelme

The sudden death in August of Neil Blake is another sad loss of an ‘incomer’ who, like the recently departed Peter Lemaire, quickly threw himself into village life, volunteering in many ways for the benefit of the community.

Neil and Margaret bought North Barn 34 years ago and until recently Neil was actively involved in various projects. He joined the Parish Council, becoming chairman; assisted in the first Neighbourhood Plan; was key to the twinning of Ewelme and Nolay; the installing of super-fast broadband and latterly was a Trustee of the Ewelme Trust. He could always be relied upon to assist in less obvious ways, such as volunteering in the Village Shop, the Horse Show, the Ewelme Society’s events and many other village organisations that required a willing, enthusiastic and practised hand. He will be much missed.



### **CALL PLUMBING HEATING**

TAPWASHERS & PLUMBING  
Repairs • Installations

BOILERS, COOKERS, GASFIRES  
Serviced • Repaired • Replaced

CENTRAL HEATING SYSTEMS  
Installations • Cleansing • Servicing

FULL BATHROOM INSTALLATIONS

UNDERFLOOR HEATING

EMERGENCY REPAIRS

**Best Prices, Service and Reliability**



**LEE BECKETT**  
**01491 614233 or**  
**07773 168120**

[www.walkinshowerbaths.co.uk](http://www.walkinshowerbaths.co.uk)

### **Caroline Kinash Physiotherapy**

### **Clinic in Benson**

**Musculoskeletal physiotherapy** for  
muscle, joint & soft tissue injuries

**Pelvic health** covering mummy  
MOTs, pregnancy, bladder, pelvic  
floor, prolapse & male pelvic pain

**Pilates** classes Warborough  
face-to-face & online

Book your appointment at  
[www.carolinekinashphysio.com](http://www.carolinekinashphysio.com)  
07768233232

# The Ewelme Society

## Christmas Fun in Ewelme? Oliver Cromwell would not have approved

In the northern hemisphere the midwinter solstice was celebrated for millennia, revolving around fire and alcohol fuelled partying, heralding the return of the sun to dispel the cold, hungry months with light, warmth and abundance. The Roman legions pushing north into the chill, would similarly celebrate the December solstice with their Saturnalia, a wild carousal in honour of their agricultural god Saturn. Various features of this enjoyable distraction were adapted into the traditions of the conquered, and eventually embraced into the religious celebration of the Christian converts.

How Ewelme villagers kept the festival depended largely on their social status. The wealthy could always afford a 'slap-up do'. The poor had a day off from their labours to go to church for the familiar age-old story. A few early examples are recorded in the archive.

In 1471 it is very possible that the deposed Queen Margaret of Anjou, widow of the murdered Henry VI, spent Christmas at the magnificent Manor at Ewelme as the prisoner/guest of Dowager Duchess Alice de la Pole. On 8<sup>th</sup> January 1472, Sir John Paston (a family with a contentious neighbour relationship with the de la Pole's in Suffolk), wrote to his mother Margaret detailing his recent merry Christmas celebration with a hint that Alice could have hosted the Royal visitor. *"Most worshcypfull and kynde moodre ... I have been the marier thys Crystmesse, wit Sir George Browen and I now come to my Lorde Archebyssshops when I have hadde as greete cheer ... As ffor Qween Margrett, I understand that sche is remeyved from Wyndesor to Walyngfforthe, nyghe to Ewhelme, my Lady of Suffolk Place in Oxonforthe Schyre."* Alice was Constable of Wallingford Castle, and although a former friend and loyal subject, was responsible for Margaret's imprisonment in the castle. As former Lancastrian supporters, the de la Pole's had a strong connection to Queen Margaret. In 1445 Alice and her husband (then Earl) William were tasked by King Henry VI in fetching the 15-yr old Margaret from France and bringing her to England as his bride. However the Lancastrian dynasty was doomed to fall. In 1471 Margaret's husband was murdered in the Tower, their 17-yr old son and heir was killed at the Battle of Tewkesbury and Margaret was captured. The usurping Edward IV put her in Alice's custody and it would



*White Christmases were usual in the 15th century and snowballing was just as popular with boys then as it is now.*

have been a Christian kindness for Alice to take her tragic prisoner from Wallingford Castle to her comfortable Ewelme mansion for Christmas.

Alice probably gave gifts to her two Chaplains (of the Almshouse and Grammar School), and maybe for her 13 Almsmen who daily prayed for her soul, but for the 'common' villagers huddling in their hovels, Christmas cheer would have been predictably scant. Worse was to come in 1644 under the Parliamentary rule, when the Lord Protector Oliver Cromwell had a mission to clear the country of *'the decadence and celebrations that threatened the core Christian beliefs.'* Anyone caught even cooking a 'Christmas goose' was arrested. Ewelme villagers were affected under their Puritan Rectors during those years. However, with the Restoration of King Charles II in 1660 the population rejoiced in having their Christmas back!

A record of the 1904 Christmas exists and demonstrates the true spirit of goodwill and 'giving' to the less fortunate. Rector Charles Cruttwell reported that *"the gloomy and unhealthy winter season had largely prevented the usual village entertainments."* He continued in a more cheerful vein, highlighting how the more well-to-do villagers had provided Christmas cheer for parishioners – *"There have not been wanting however, several hospitable gatherings. Among them an excellent treat for all the members of the Day School, with tea, followed by a splendid Christmas tree, hung with really charming presents. This was given by several kind friends, the chief burden of the arrangements falling on Mr and Mrs Poupart, [shopkeepers] and Mr and Mrs Samuel Godden [the blacksmith]. A Sunday School treat given by the Rector, followed by carol-singing and a Magic Lantern exhibition. The Ladies of the Manor [the Misses Quin] entertaining the whole of the district, men and women over 60 in number. Tea was followed by a 'Punch and Judy Show' and a present for every guest. Mrs Hampden [The Old Mansion at Cottesmore] also entertained all the occupants of the Cloisters to a handsome refection. Miss Franklin gave a tea to her district, and the Choir and Bell Ringers had a supper at the Rectory."* If Oliver Cromwell could witness the current secular 'Festive' jamboree he would, if he still had one, surely be spinning in his grave!

Carol Sawbridge – Ewelme Village Archive 20

## Registered Osteopath

Mr Rohan Iswariah D.O.

For vouchers & information  
please visit our website at:

[www.localosteopath.com](http://www.localosteopath.com)



**01491-838866**

An Osteopathic approach to  
Treatment for Sports  
Injuries, Back Pain,  
Headaches, Joint Pains,  
Sciatica, Brachialgia,  
Arthritis, Tennis elbow,  
Pulled ligaments &  
Muscles, Musculoskeletal  
problems in general



Ivy Cottage | Chapel Lane | Benson | Oxon | OX10 6LU



### Earth Trust Farm Pumpkin Patch

This October, come down to the farm for a whole host of great activities for visitors of all ages to enjoy at the Pumpkin Patch, with heaps of harvesting fun to be had!

As well as the all-important growing field, where you can pick your perfect pumpkin and select your favourite squash direct from the earth it grew in, there's a storytelling teepee with autumnal stories and harvest-time tales, in Earth Lab's Discovery Zone science experiments and testing tables to delve into the hidden world of soil, plus a mini scarecrow trail around the farm and a mega maize maze to beat in the field!

**Dates: Sundays 13th, 20th, 27th and Monday 28th-Thursday 31st October**

**Times: 10am-1pm and 1pm-4pm**  
**Tickets: £3 per person in advance (plus booking fee), £5 on the gate. Under 3s free.**



## The Nettlebed Dancing and Music Friends

**A SOCIAL DANCE ON Saturday 5th October**

**WITH IRELAND'S DECLAN GAYNOR THE SINGING, FAST FINGERED ACCORDIONIST**

Declan is the very well known Irish singer, accomplished keyboard player and accordionist who brings the sounds and songs of Irish, Country Music and popular 60's/70's songs and he will be on stage for an enjoyable evening at The Nettlebed Club RG9 5DD. 8pm to 11pm. We are a not for profit group of friends but do ask for a donation of just £10 on the door.



**Free parking. Disability facilities. Good size dance floor. Bar also sells tea & coffee. Friendly venue.**

Bring your friends and enjoy a great night out. Just arrive - tickets not necessary.

**Queries? Call Keith on 07752 374 610.**



**DIRTY CARPETS, UPHOLSTERY, RUGS**  
**Unbeatable results**  
**Most carpets dry within the hour**  
**Removes almost all spots and stains**  
**GRIMEBUSTERS**  
**www.grimebusters.co.uk • 01491 670013 • 01865 726983**

# Another Great Horse and Fun Dog Show

The horse show was well attended on yet another very hot day. About 120 riders took part, the jumping and showing classes were both well supported. It was lovely to see the local celebrity Ben Fogle and his family join us with his children Iona and Ludo entering their ponies in the jumping classes.

The dog show was always a great favourite with the local dog owners, entries were definitely up this year. All proceeds from the dog show goes to the Therapy Dogs charity.

The entries from Best Decorated Manes & Tails pony class was donated to the local RDA and was judged by Mr & Jeremy Brazil the local RDA representative. Any surplus money after the show is also donated to other local charities.

Thanks must go to Miss Marlene Edwards who kindly allows us the use of the venue. All of our very generous sponsors without their financial contributions we would struggle. Also thank you to everyone who freely gave their time on the day especially my very small but super efficient committee who puts up with me throughout the year.

It's hard work but so rewarding when everyone goes home happy carrying their winning rosettes and trophies.

*Sandra Ayling*



Celebrity visitor, Ben Fogle



*'Now Maverick, look what you've just done to that jump!'*

*But Maverick still refuses - he doesn't like yellow.*



*The most loved-up pony*



*The Piebald Tattoo*



*The smallest mount and rider*



*Double Trouble*



*Nice perm*



*You were supposed to plait my mane, not yours!*



THE SHEPHERD'S HUT



Bottomless Brunch every Saturday - Steak night every Thursday  
Open 7 days - Large Enclosed Garden - Live Music - Seasonal Menus  
[www.shepherdshutewelme.co.uk](http://www.shepherdshutewelme.co.uk) 01491 836 636



THE THREE HORSESHOES



Private Parties - Regular Live Music - Probably the best Roast in Oxfordshire  
Large Secluded Beer Garden - Varied Drink Selection - Local, Seasonal Menus  
[www.threehorseshoesbenison.co.uk](http://www.threehorseshoesbenison.co.uk) 01491 838 242

*Your Landlord Fluxy looks forward to welcoming you!*